

hCCR8(BALB/c)(2)

Nomenclature	BALB/cAnSmoc- <i>Ccr8</i> ^{em(hCCR8)Smoc}
Cat. NO.	NM-HU-220501
Strain State	Embryo cryopreservation

Gene Summary

Gene Symbol CCR8	Synonyms	Cmkbr8
	NCBI ID	12776
	MGI ID	1201402
	Ensembl ID	ENSMUSG00000042262
	Human Ortholog	CCR8

Model Description

The endogenous mouse *Ccr8* gene was replaced by human CCR8 gene.

*Literature published using this strain should indicate: hCCR8(BALB/c)(2) mice (Cat. NO. NM-HU-220501) were purchased from Shanghai Model Organisms Center, Inc..

Validation Data

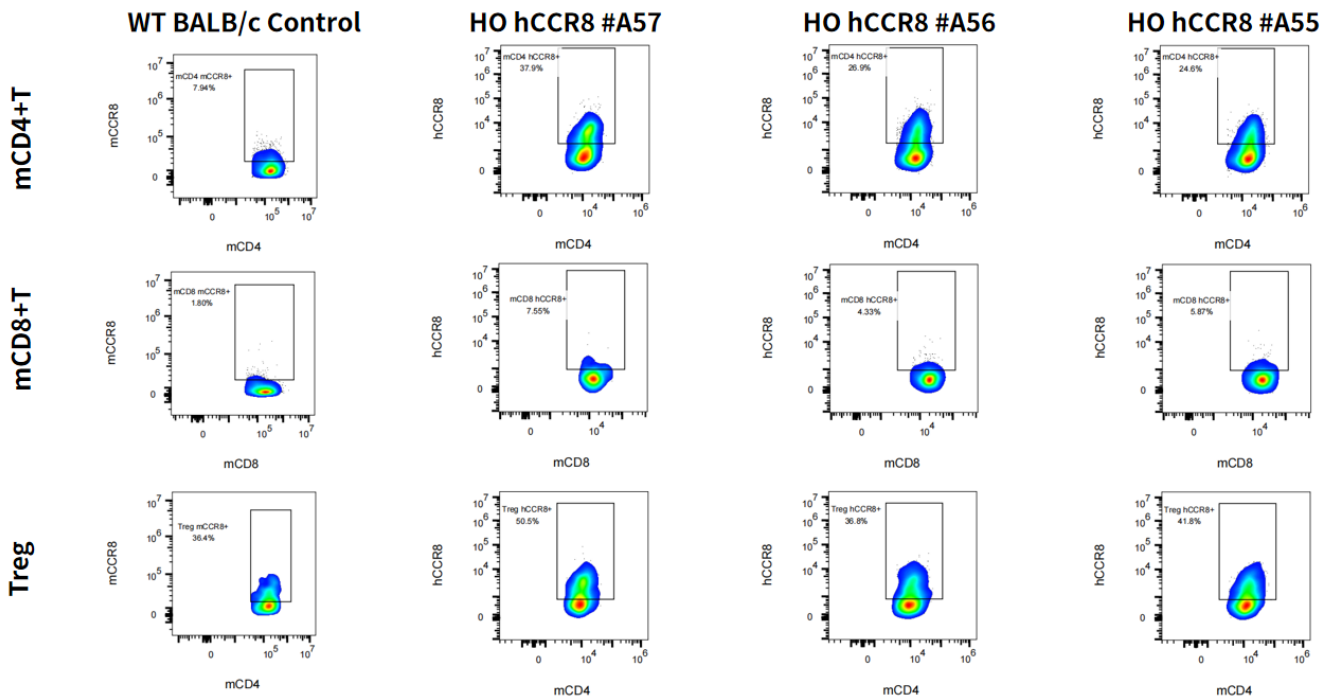


Fig1. Detection of hCCR8 expression on spleen-derived activated T cells and Tregs in hCCR8 KI mice.

*Splenocytes were activated by anti-mCD3/CD28 antibody *in vivo*.

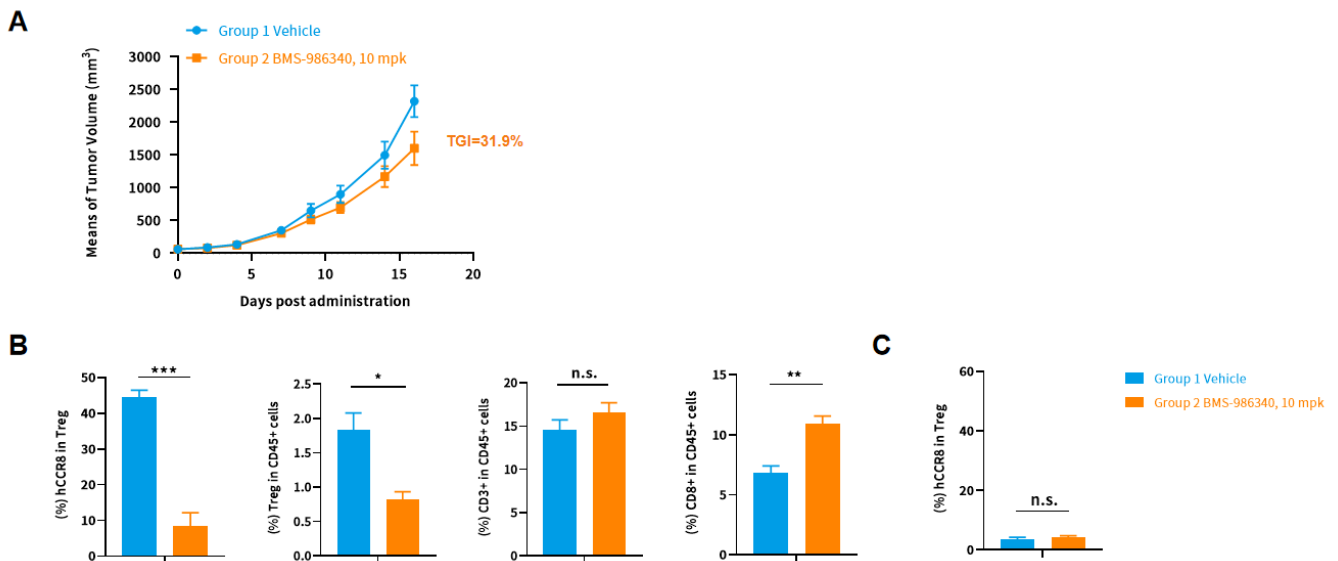


Fig2. *In vivo* antitumor responses of anti-hCCR8 alone in BALB/c hCCR8(v2) knockin mice engrafted with CT26 tumor.

(A) Mean tumor growth curves upon treatment; (B) *In vivo* antitumor response of anti-hCCR8 in hCCR8 (v2) mice bearing CT26 tumor; (C) Expression of hCCR8 in spleen in hCCR8 (v2) mice bearing CT26 tumor.

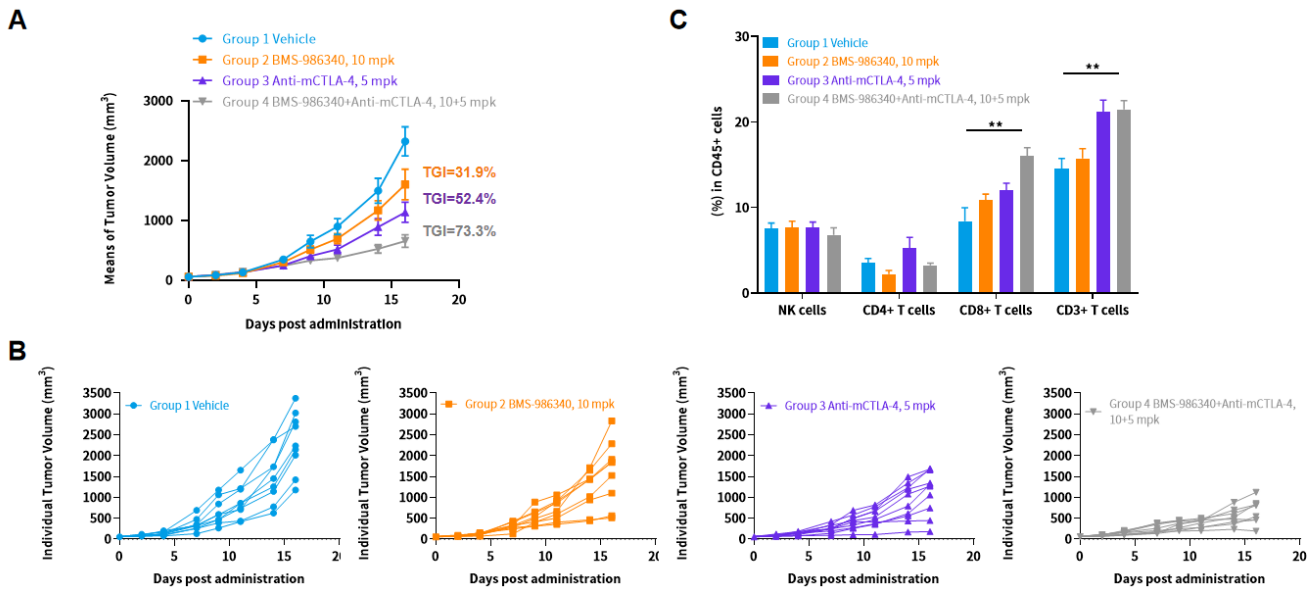


Fig3. *In vivo* antitumor responses of anti-hCCR8 alone or in combination with anti-CTLA-4 in BALB/c hCCR8(v2) knockin mice engrafted with CT26 tumor.

(A) Mean tumor growth curves upon treatment; (B) Individual tumor growth curves upon treatment; (C) *In vivo* antitumor response of anti-hCCR8 in hCCR8 (v2) mice bearing CT26 tumor.